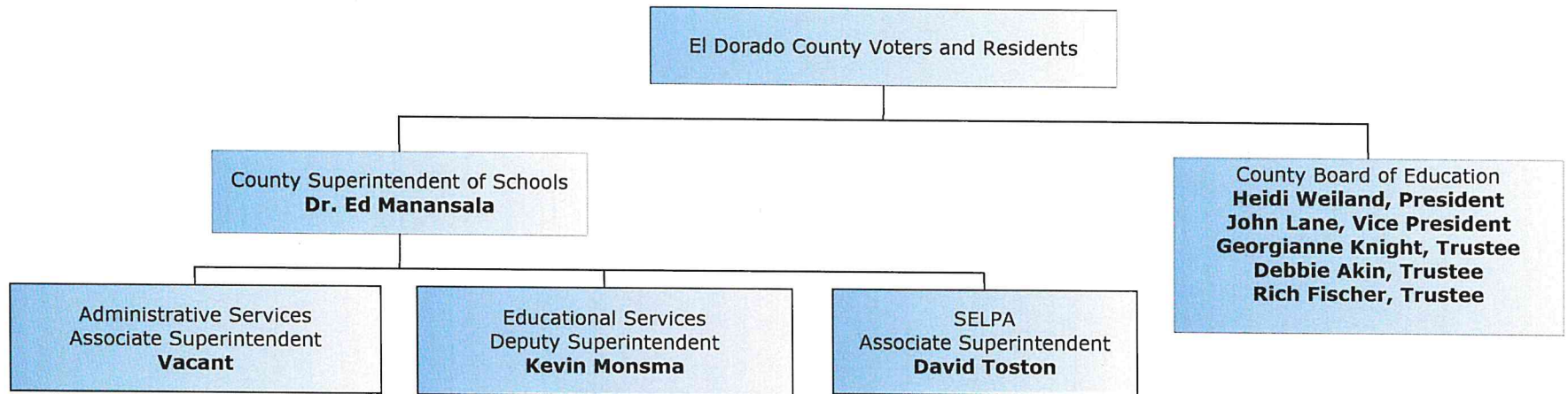




2019-20  
ORGANIZATIONAL CHART  
February 2020

# El Dorado County Office of Education 2019-20 Organization Chart February 2020



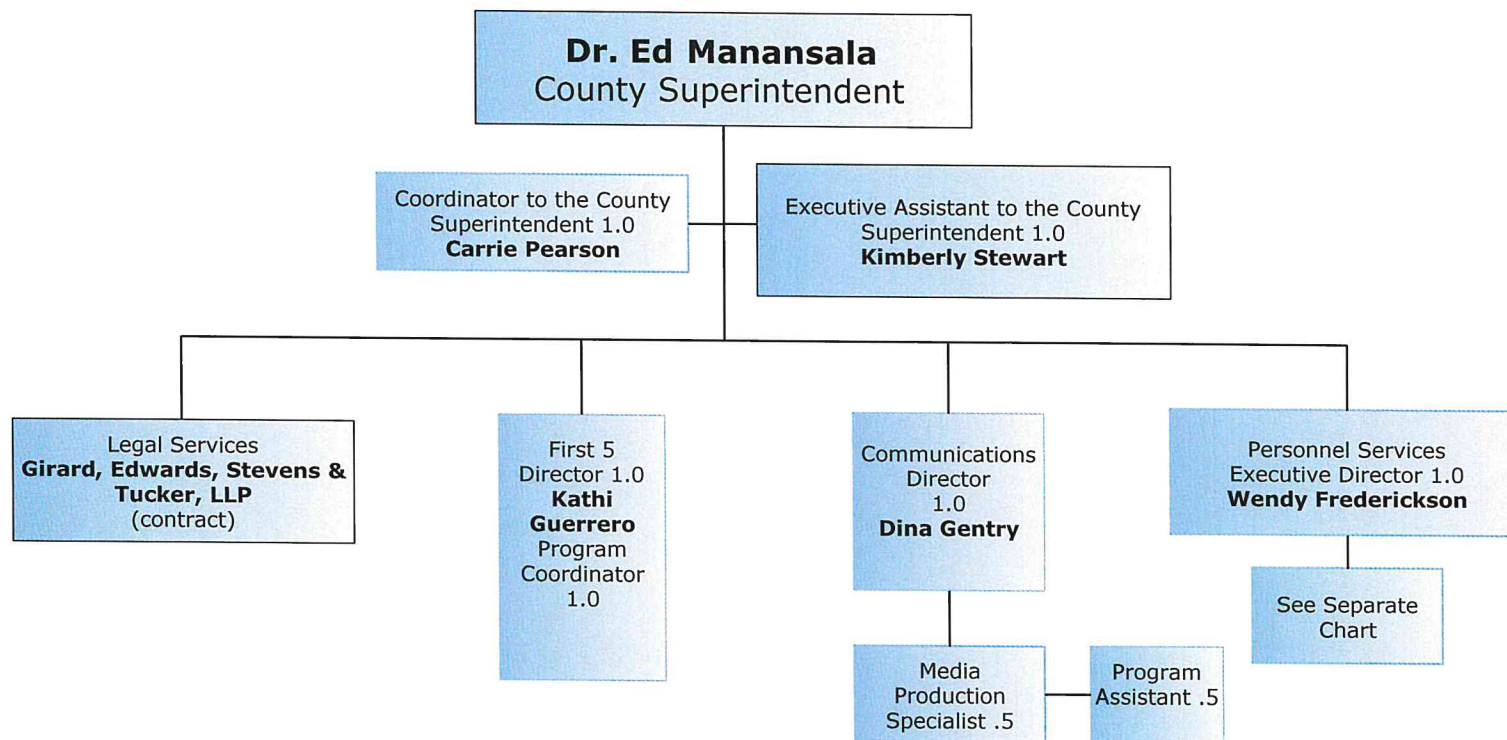
**Georgianne Knight:**  
**John Lane:**  
**Debbie Akin:**  
**Heidi Weiland:**  
**Rich Fischer:**

*District 1 (Portions of Buckeye, Latrobe, Rescue and EDUHSD)*  
*District 2 (Indian Diggings, portions of Buckeye, Gold Oak, Latrobe, Mother Lode, Pioneer, Placerville, Pollock Pines, Rescue and EDUHSD)*  
*District 3 (Portions of Buckeye, Camino, Gold Oak, Mother Lode, Pioneer, Placerville, Rescue and EDUHSD)*  
*District 4 (Black Oak Mine, Gold Trail, portions of Buckeye, Camino, Mother Lode, Placerville, Pollock Pines, Rescue, Silver Fork and EDUHSD)*  
*District 5 (Portions of Camino, Indian Diggings, EDUHSD, Pioneer, Pollock Pines, Silver Fork, and Lake Tahoe USD)*

**El Dorado County Office of Education, 6767 Green Valley Road, Placerville, CA 95667 (530-622-7130) Fax (530-621-2543)**



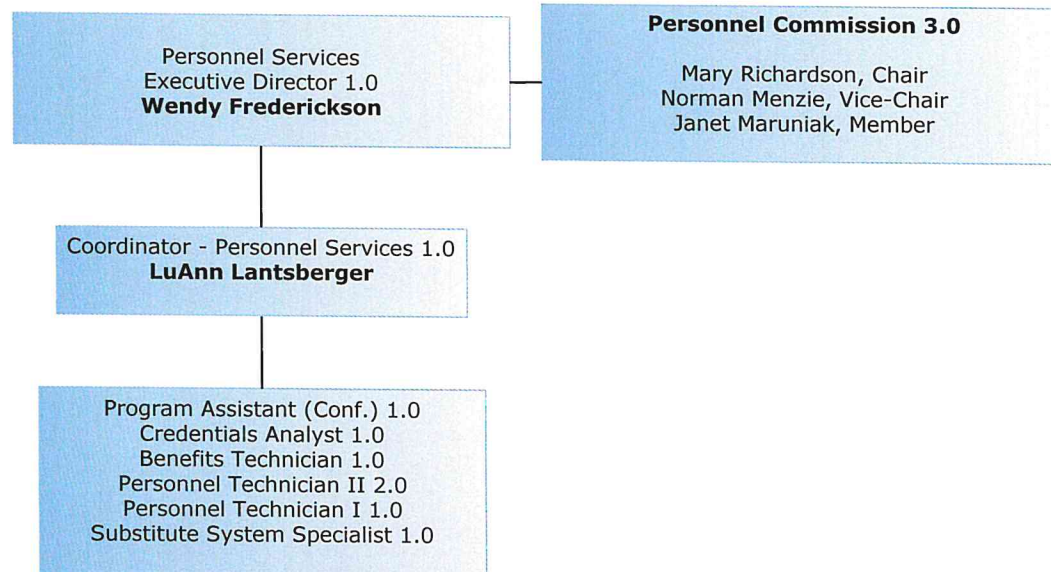
# El Dorado County Office of Education 2019-20 Organization Chart **County Superintendent** **February 2020**



The numbers in boxes refer to FTE - full time equivalent positions.

El Dorado County Office of Education, 6767 Green Valley Road, Placerville, CA 95667 (530-622-7130) Fax (530-621-2543)

El Dorado County Office of Education  
2019-20 Organization Chart  
**Personnel Services**  
**February 2020**

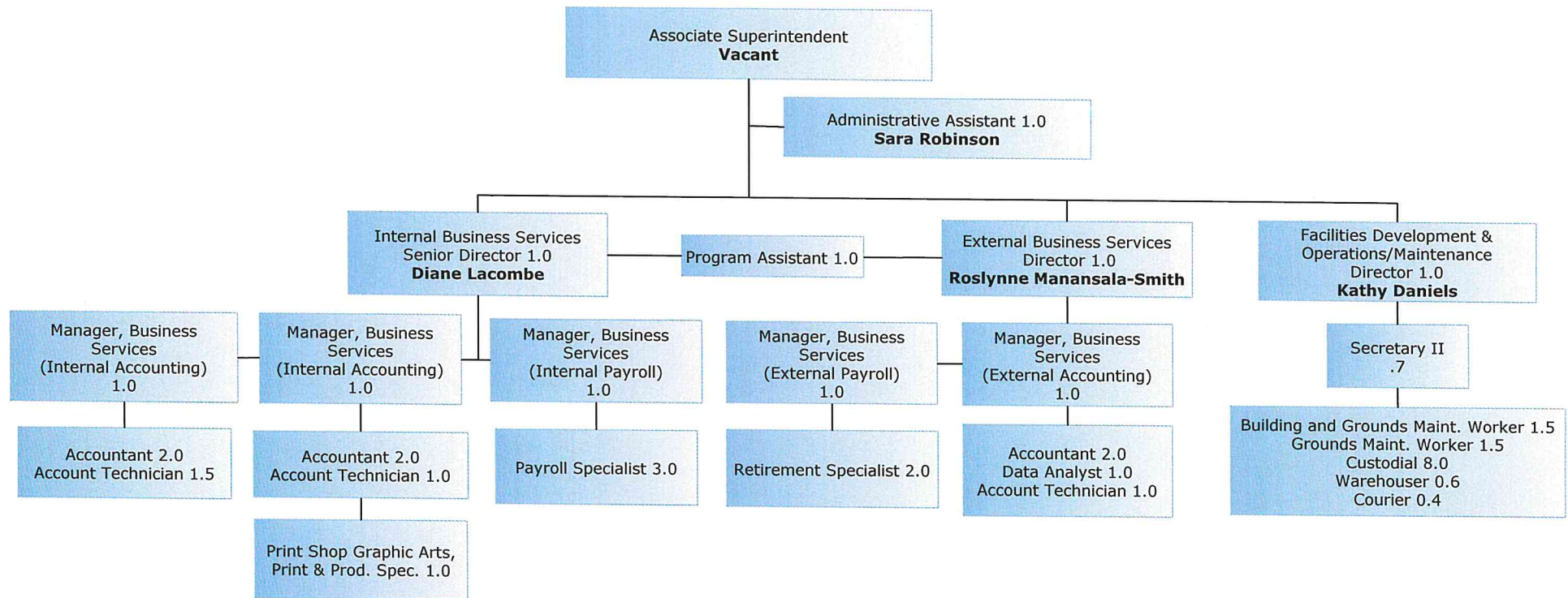


The numbers in boxes refer to FTE - full time equivalent positions.

El Dorado County Office of Education, 6767 Green Valley Road, Placerville, CA 95667 (530-622-7130) Fax (530-621-2543)



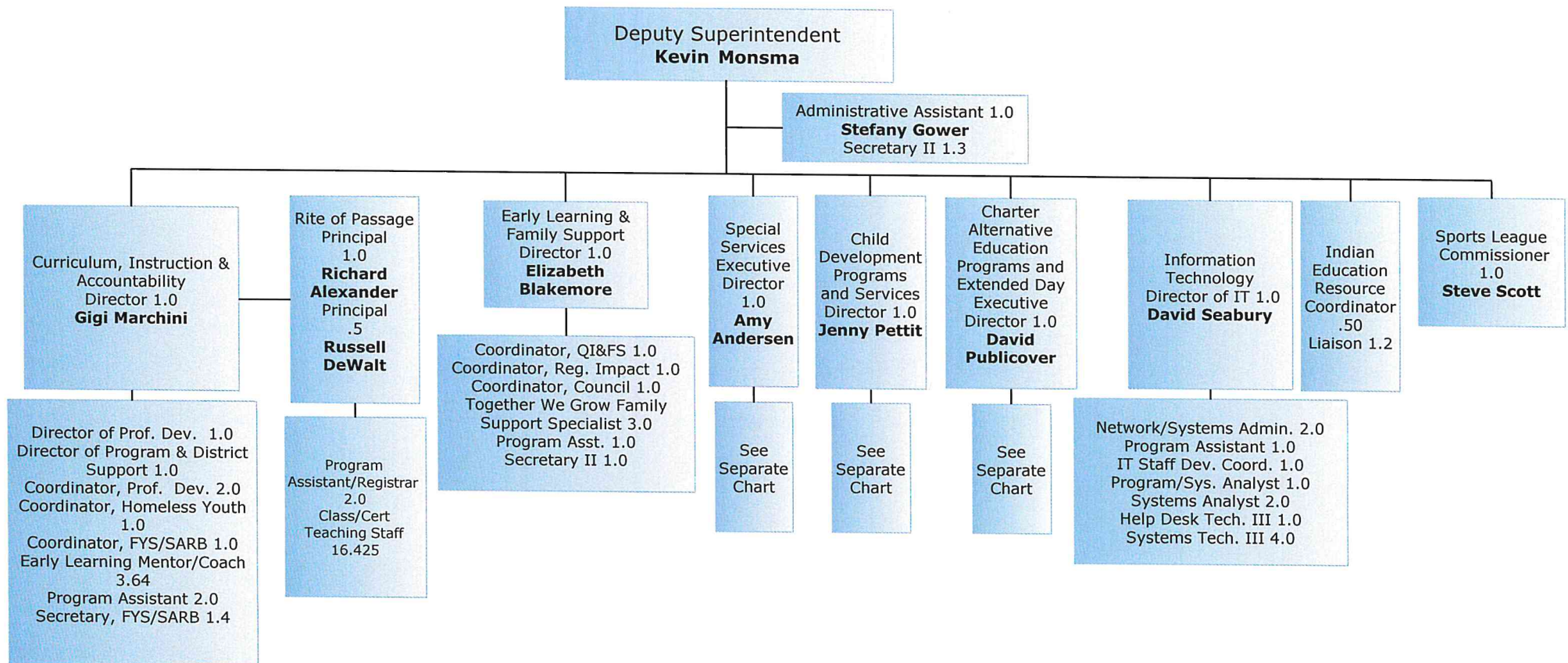
# El Dorado County Office of Education 2019-20 Organization Chart **Administrative Services** **February 2020**



The numbers in boxes refer to FTE - full time equivalent positions.

El Dorado County Office of Education, 6767 Green Valley Road, Placerville, CA 95667 (530-622-7130) Fax (530-621-2543)

# El Dorado County Office of Education 2019-20 Organization Chart Educational Services and Information Technology February 2020

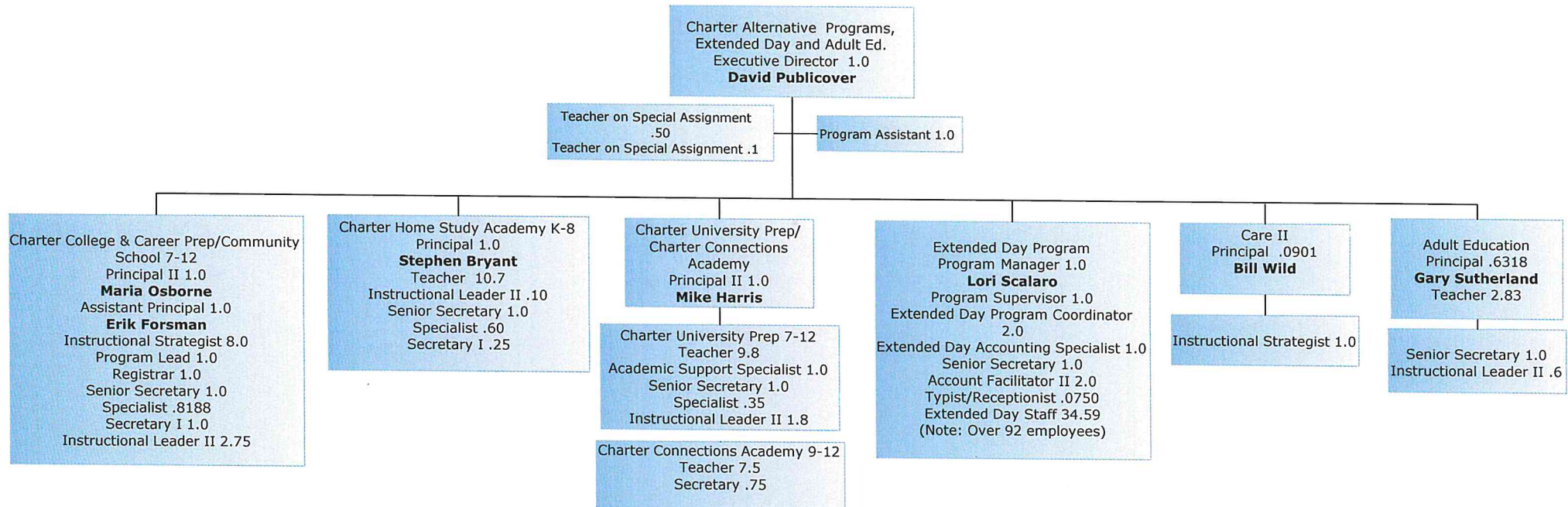


The numbers in boxes refer to FTE - full time equivalent positions.

El Dorado County Office of Education, 6767 Green Valley Road, Placerville, CA 95667 (530-622-7130) Fax (530-621-2543)



# El Dorado County Office of Education 2019-20 Organization Chart Charter Alternative Programs, Extended Day and Adult Education February 2020

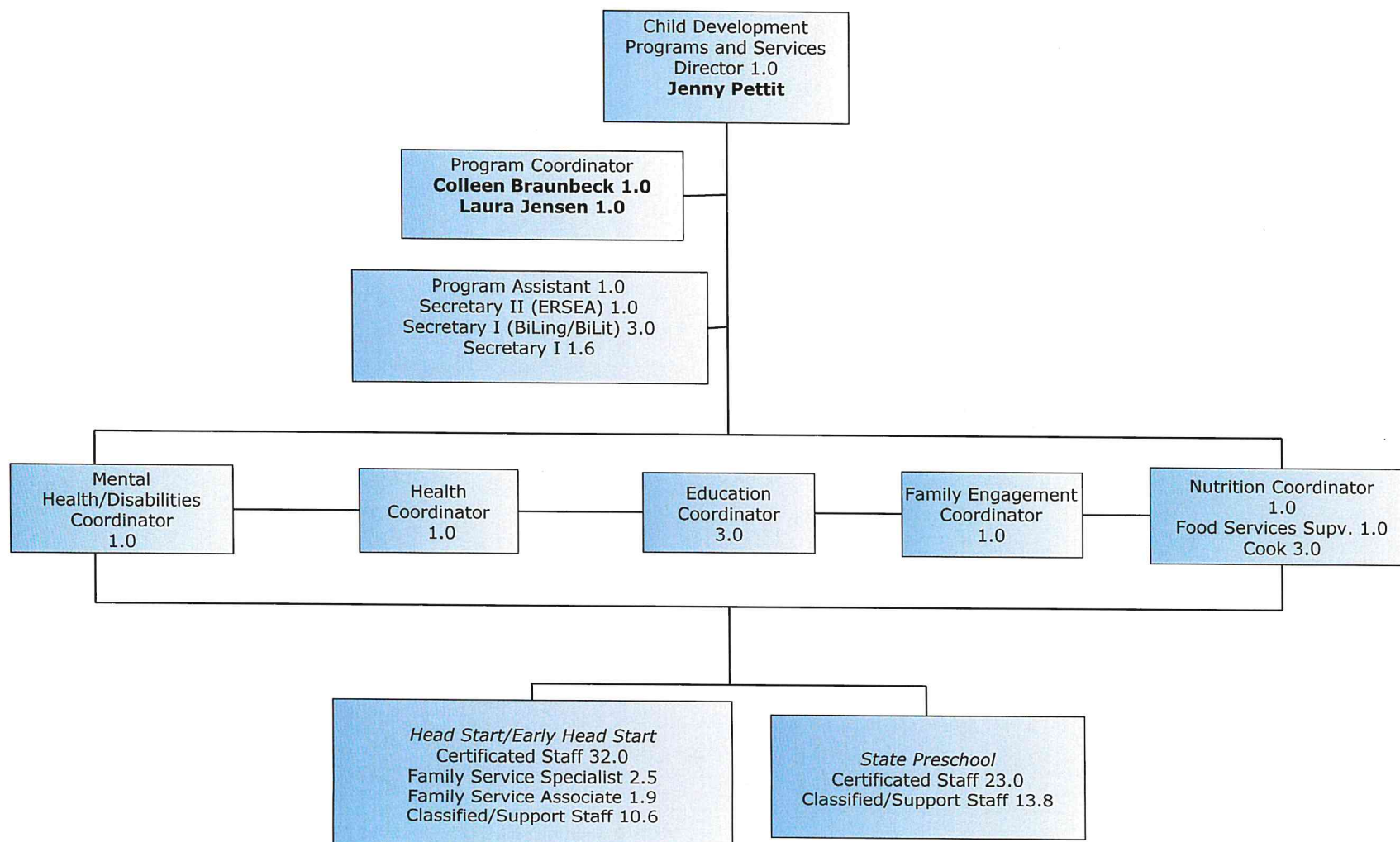


The numbers in boxes refer to FTE - full time equivalent positions.

El Dorado County Office of Education, 6767 Green Valley Road, Placerville, CA 95667 (530-622-7130) Fax (530-621-2543)



# El Dorado County Office of Education 2019-20 Organization Chart Child Development Program and Services February 2020

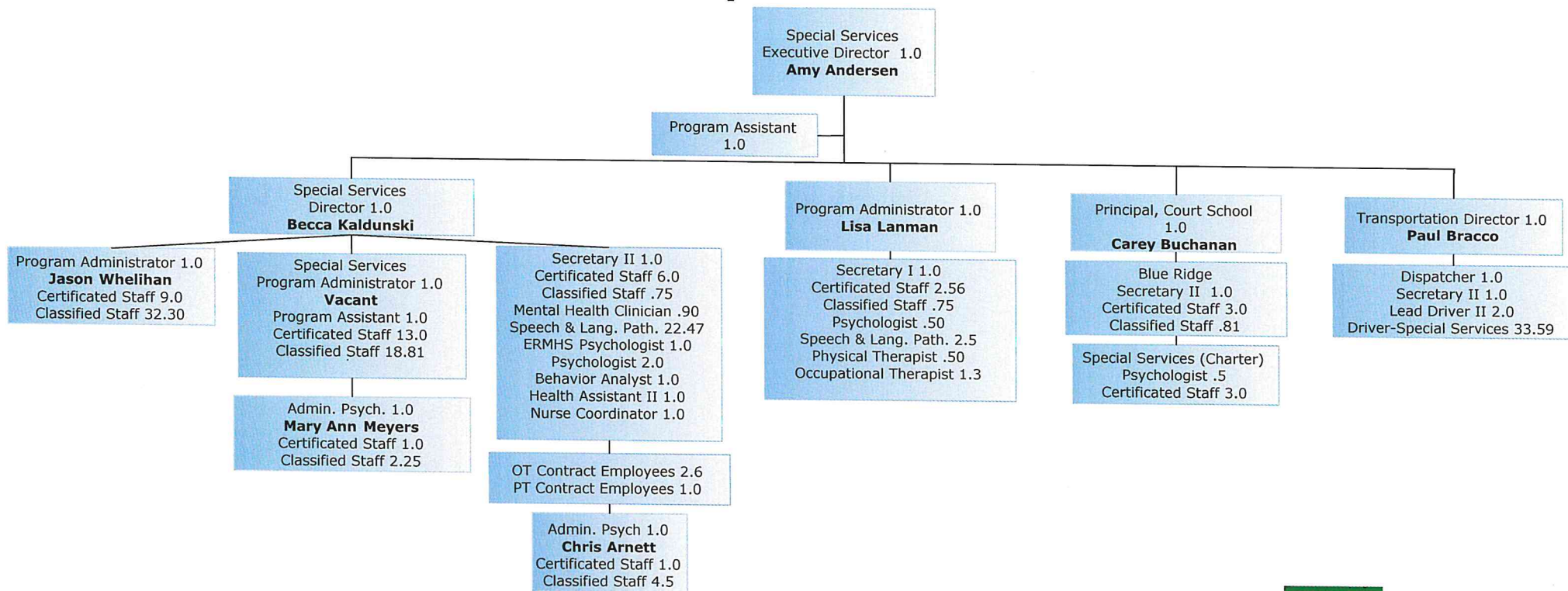


The numbers in boxes refer to FTE - full time equivalent positions.

El Dorado County Office of Education, 6767 Green Valley Road, Placerville, CA 95667 (530-622-7130) Fax (530-621-2543)



# El Dorado County Office of Education 2019-20 Organization Chart **Special Services** **September 2019**

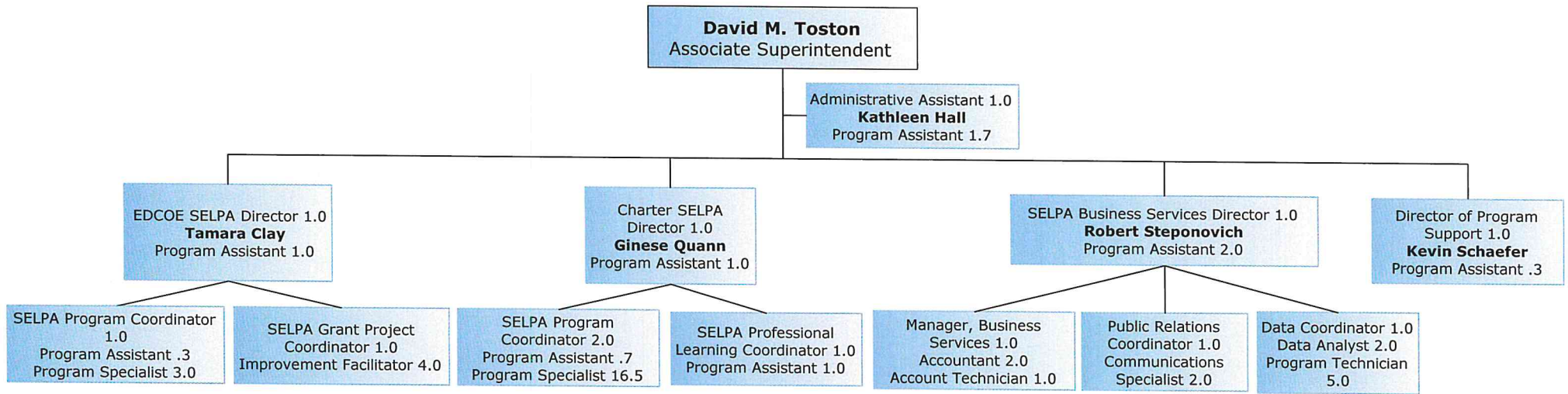


The numbers in boxes refer to FTE - full time equivalent positions.

El Dorado County Office of Education, 6767 Green Valley Road, Placerville, CA 95667 (530-622-7130) Fax (530-621-2543)



# El Dorado County Office of Education 2019-20 Organization Chart **SELPA and CHARTER SELPA** **February 2020**



The numbers in boxes refer to FTE - full time equivalent positions.

El Dorado County Office of Education, 6767 Green Valley Road, Placerville, CA 95667 (530-622-7130) Fax (530-621-2543)

